

2023 annual report to the Community

# John Hartley School B-6 and John Hartley B-6 Children's Centre

John Hartley School B-6 number: 1901

John Hartley B-6 Children's Centre number: 1423

Partnership: Peachey



School principal:

Joanna Everett



Signature

Date of endorsement:

20/02/2024



# Context Statement

John Hartley School B-6 caters for students from R-6. At the time of this report, the enrolment in 2023 is 587. John Hartley School B-6 is classified as Category 2 on the Department for Education Index of Educational Disadvantage. At the time of this report, the school population includes 14% Aboriginal students, 18% students with disabilities, 11% students with English as an additional language or dialect (EALD) funded background, 2% children/young people in care. Further information about the school is available on the school's website (including its context statement), as well as the My School website.

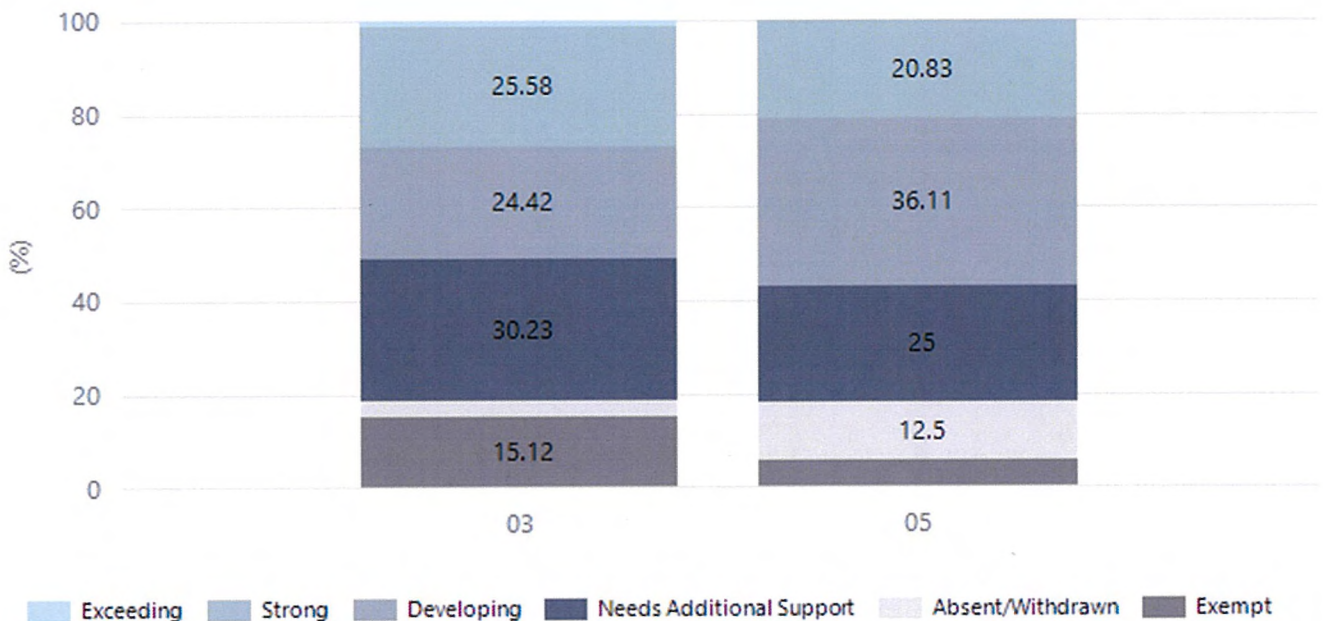
Information about John Hartley B-6 Children's Centre is available on the centres website, as well as the Australian Childrens Education and Care Quality Authority (ACECQA) website.

## Performance Summary

### NAPLAN Proficiency

In 2023, the Australian Curriculum, Assessment and Reporting Authority (ACARA) - a Commonwealth Independent statutory authority - announced changes to NAPLAN performance reporting. This new way of reporting by ACARA that NAPLAN results from 2023 will not be comparable to previous years. The new approach replaces the previous numerical NAPLAN bands and the national minimum standard.

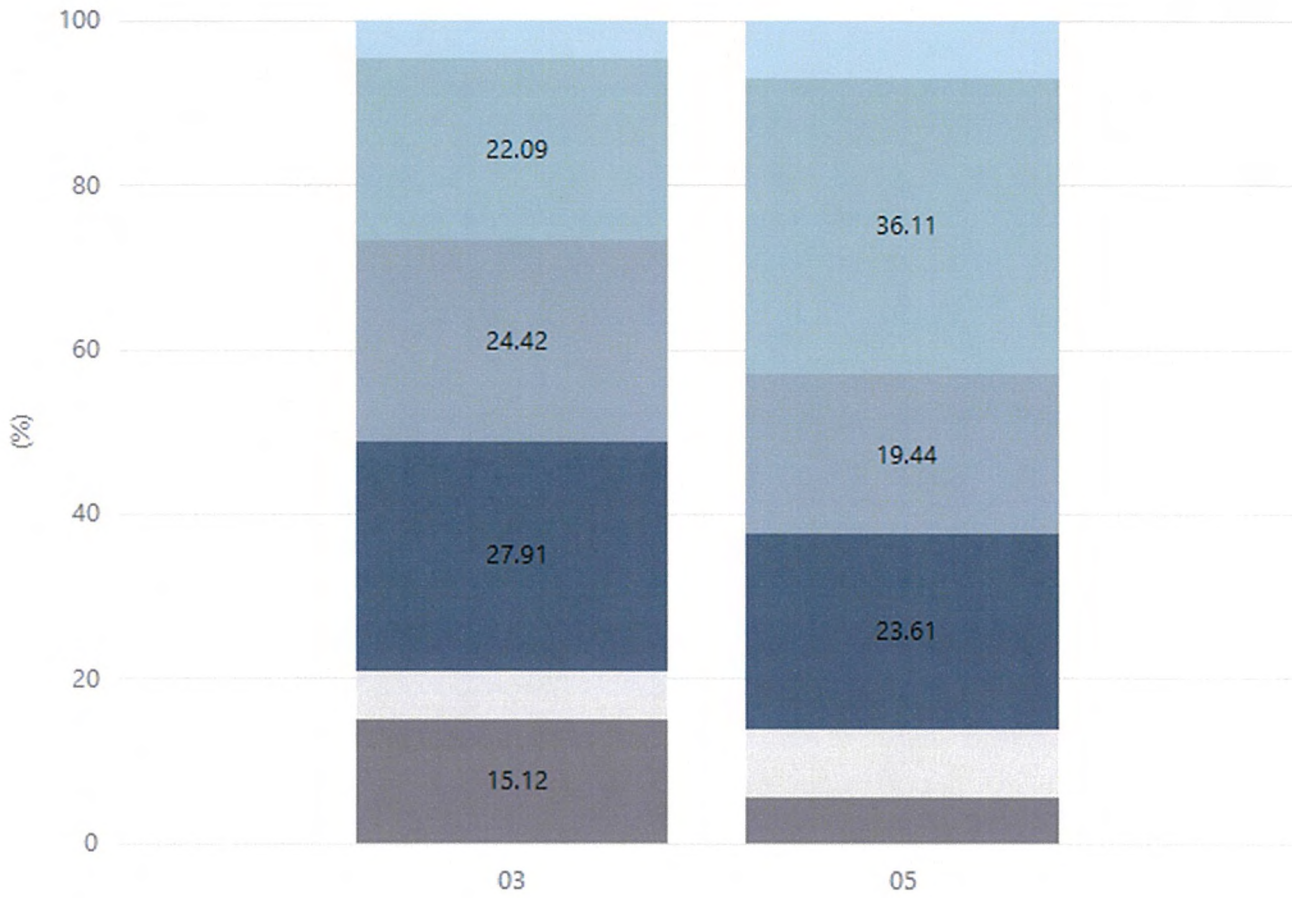
#### Numeracy



Year Level	03	05
Exceeding	1	
Strong	22	15
Developing	21	26
Needs Additional Support	26	18
Absent/Withdrawn	3	9
Exempt	13	4
Total	86	72

Data Source: Department for Education Assessment Data Holdings, 2023. When there are less than six students in a cohort, no data is supplied.

## Reading

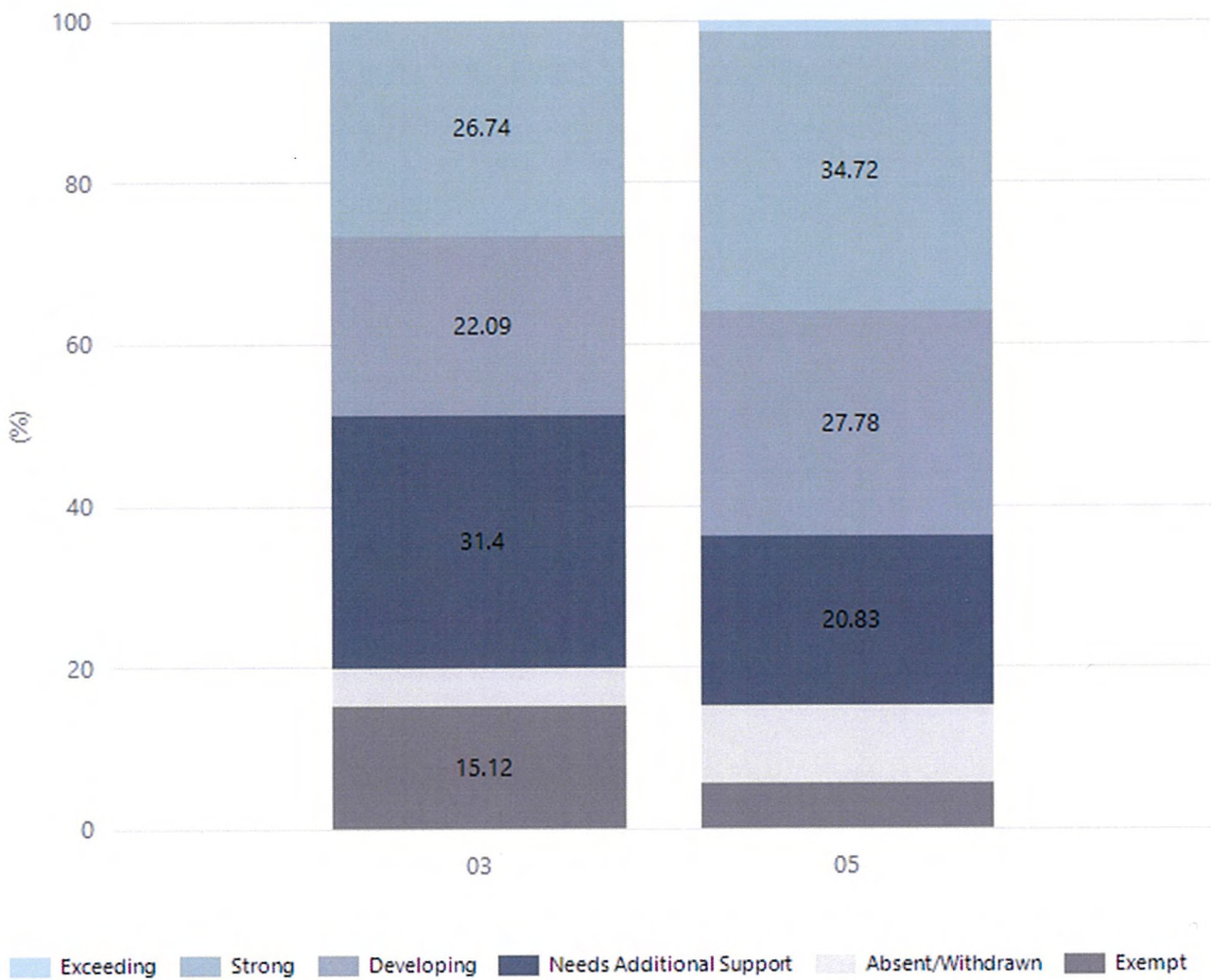


Exceeding Strong Developing Needs Additional Support Absent/Withdrawn Exempt

Year Level	03	05
Exceeding	4	5
Strong	19	26
Developing	21	14
Needs Additional Support	24	17
Absent/Withdrawn	5	6
Exempt	13	4
Total	86	72

Data Source: Department for Education Assessment Data Holdings, 2023. When there are less than six students in a cohort, no data is supplied.

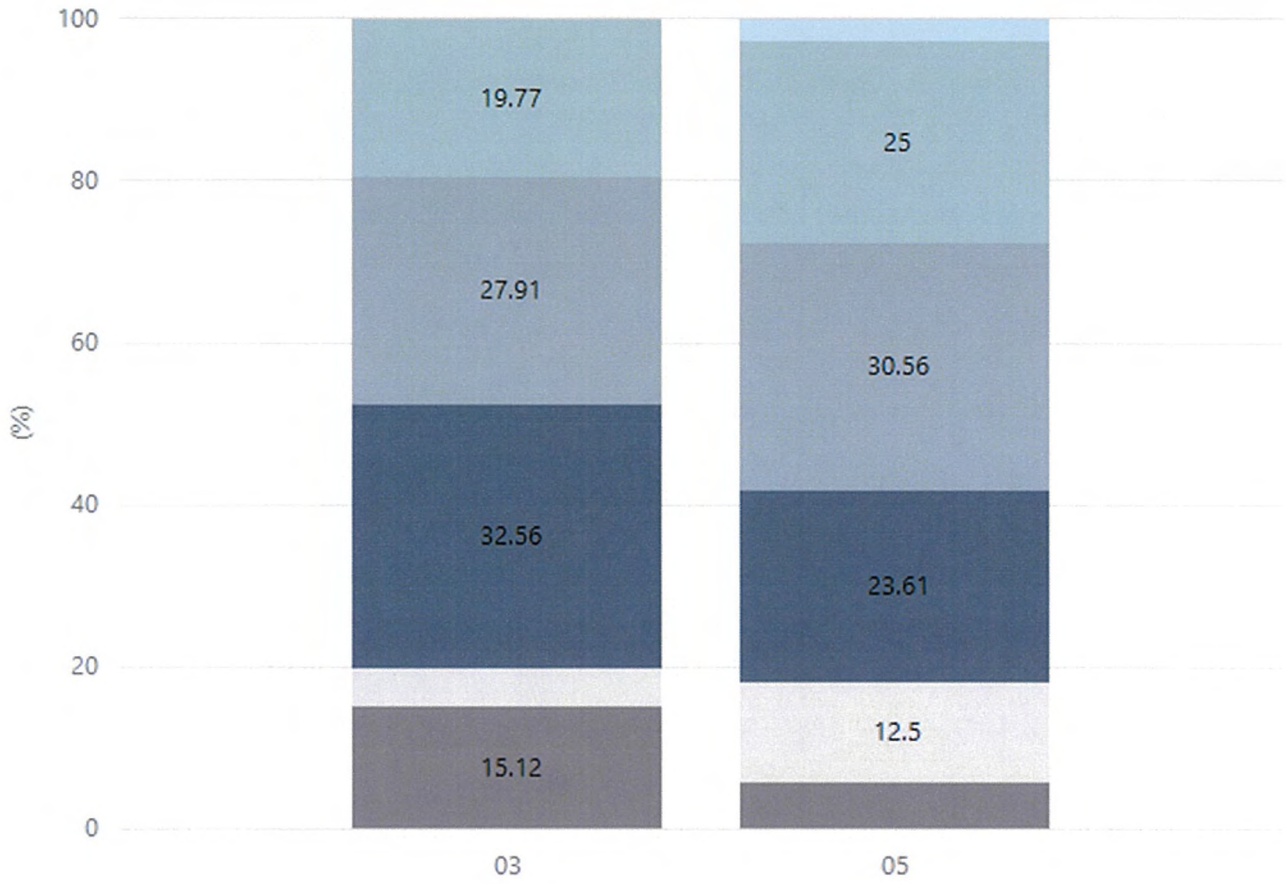
## Writing



Year Level	03	05
Exceeding		1
Strong	23	25
Developing	19	20
Needs Additional Support	27	15
Absent/Withdrawn	4	7
Exempt	13	4
Total	86	72

Data Source: Department for Education Assessment Data Holdings, 2023. When there are less than six students in a cohort, no data is supplied.

## Grammar



Exceeding Strong Developing Needs Additional Support Absent/Withdrawn Exempt

Year Level	03	05
Exceeding		2
Strong	17	18
Developing	24	22
Needs Additional Support	28	17
Absent/Withdrawn	4	9
Exempt	13	4
Total	86	72

Data Source: Department for Education Assessment Data Holdings, 2023. When there are less than six students in a cohort, no data is supplied.